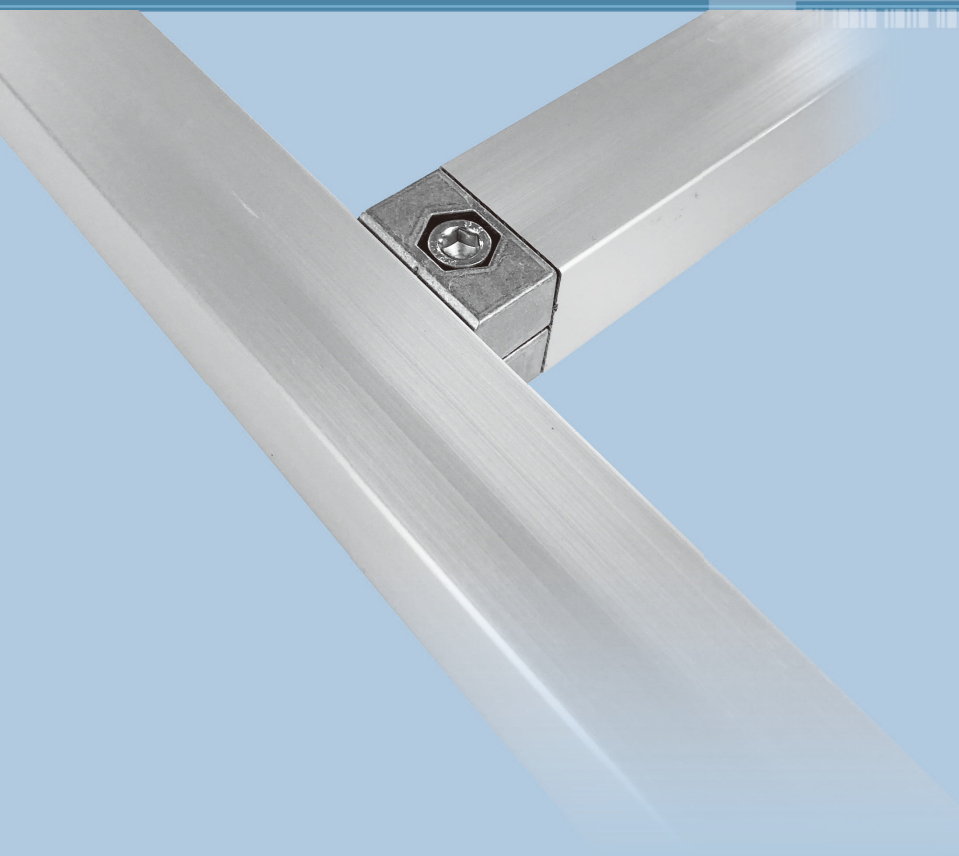


www.gsace.com

28X28 SQAURE RACKING SYSTEM

ISO 9001/ISO 14001 Certified

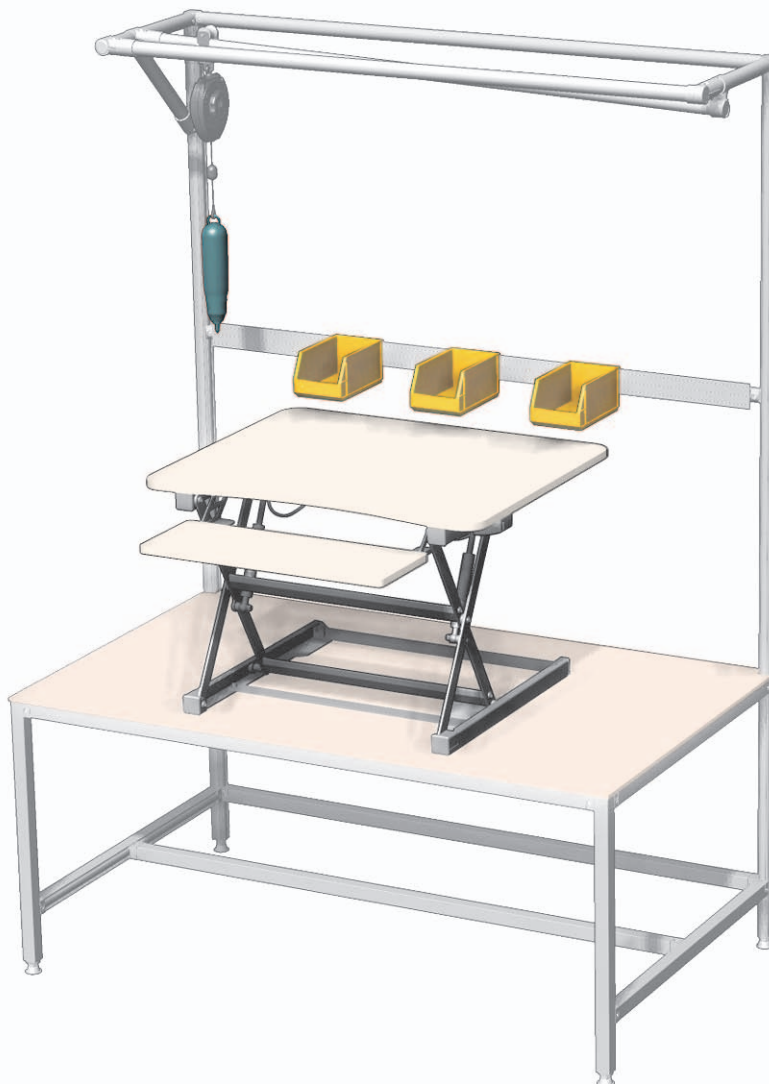
G.S.ACE INDUSTRY
is the only pipe rack manufacturer in Korea
equipped with comprehensive production systems
ranging from parts production to assembly



G.S.ACE G.S.ACE INDUSTRY CO., LTD.

ALUMINUM SQUARE RACKING SYSTEM SPECIAL FEATURES

- Easier Assembly than Aluminum Profiles (Reduce assembly time by 40%)
- No Exterior Groove (No Need to fill T-Groove when using in cleanroom)
- Low Cost and Lightweight Compared to Aluminum Profile
- Flat Rack Possible by Linking Aluminum Square Pipe with Joint (Easy to fix plate and parts with flat square rack)
- Compatible with Circular $\varnothing 28$ Aluminum Pipes and Joints (Compatible with Existing Circular $\varnothing 28$ Aluminum Pipes and Joints and Various Accessories)



28X28 AL SQUARE RACKING SYSTEM

(Application for design pending for all items)

28x28 ALUMINUM PIPE

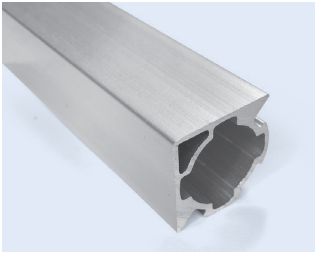
* Surface Treatment - PE-Coating

Unit : mm

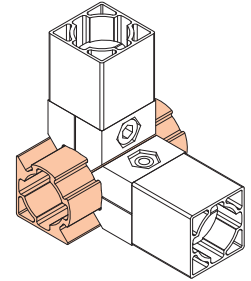
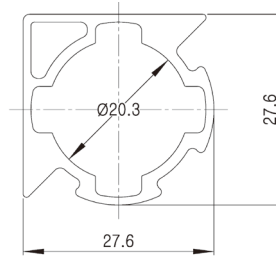
NEW

ASQ2812A

90 Degree 2-way linking square pipe type



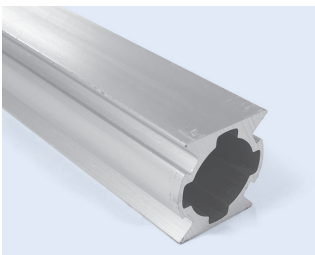
Material	A6N01-T5
Weight	0.566 kg/m
Q'ty/Bundle	8EA



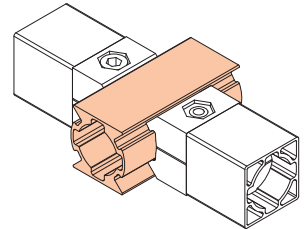
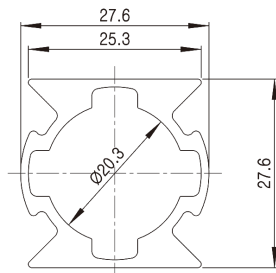
NEW

ASQ2812B

180 Degree 2-way linking square pipe type



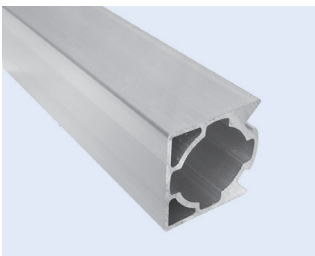
Material	A6N01-T5
Weight	0.665 kg/m
Q'ty/Bundle	8EA



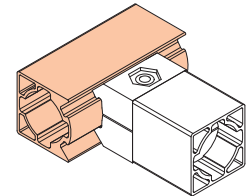
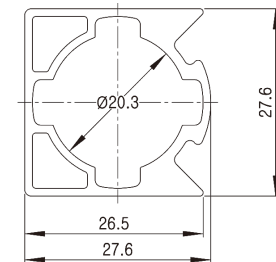
NEW

ASQ2812C

1-way linking square pipe type



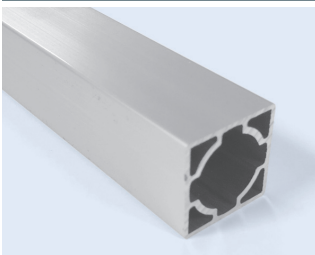
Material	A6N01-T5
Weight	0.591 kg/m
Q'ty/Bundle	8EA



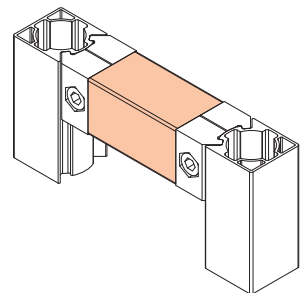
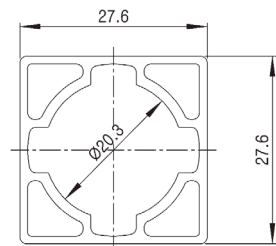
NEW

ASQ2812D

Square pipe to prevent foreign particles from entering



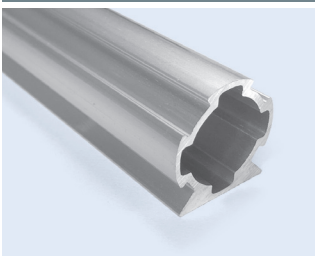
Material	A6N01-T5
Weight	0.555 kg/m
Q'ty/Bundle	8EA



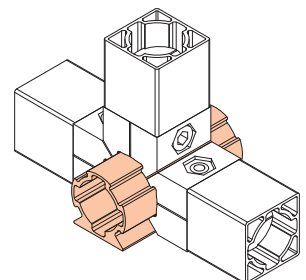
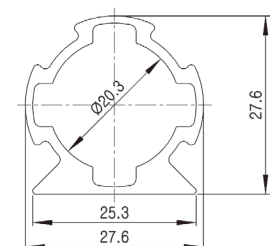
NEW

ASQ2812E

3-way linking square pipe type



Material	A6N01-T5
Weight	0.522 kg/m
Q'ty/Bundle	8EA



28X28 AL SQUARE RACKING SYSTEM

28x28 ALUMINUM JOINT & ACCESSORIES

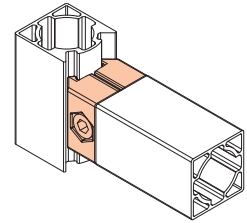
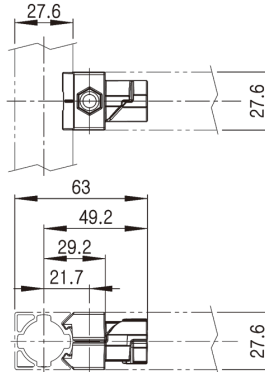
NEW

C-001

Square Joint for $\varnothing 28$

(Utility Model Application, PCT Pending)

Unit : mm



- Weight : 0.021kg
- Q'ty/Box : 300pcs

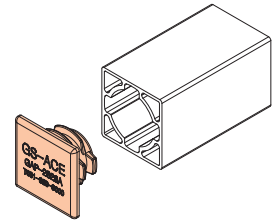
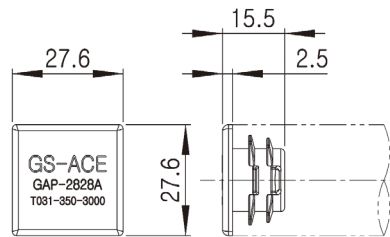
- C-001 : 2pcs
- M0620/N06W-55 : 1set
- Weight : 0.050kg
- Q'ty/Box : 150set

※ Recommend that the pipe linking with the joints are calculated by floating 30mm from the center of the pipe

NEW

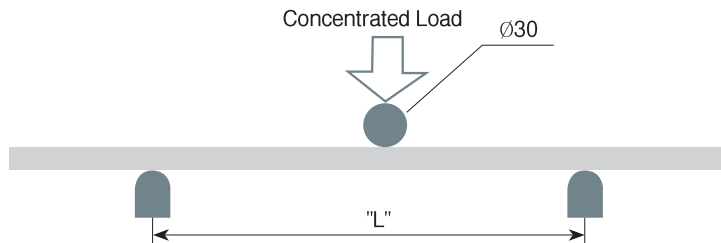
GAP-2828A

Inner Diameter Cap for $\varnothing 28$



- Weight : 0.003kg
- Q'ty/Box : 1500pcs

PIPE BENDING STRENGTH



PART NO.	TYPE	Concentrated Load (kgf)		Weight (g/m)
		L=500mm	L=1000mm	
28X28 AL SQUARE PIPE (ASQ2812D)		412	202	555
$\varnothing 28$ AL PIPE (AP2812)		225	113	382
$\varnothing 28$ STS PIPE (S2807)		166	98	448

HEAD OFFICE / FACTORY

13-7, Kalchun Unmal-gil, Hyangnam-eup, Hwaseong-si, Gyeonggi-do, Korea (404-1, Songgok-ri)

TEL : 82-31-350-3000 FAX : 82-31-350-3010

CHANGWON FACTORY

50, Wanam-ro, Seongsan-gu, Changwon-si, Gyeongsangnam-do, Korea (106ho, Techzone SKtechnopark, 77-1, Seongsan-dong)

TEL: 82-55-267-8844~5 FAX : 82-55-267-7704



G.S.ACE INDUSTRY CO., LTD.

<http://www.gsace.com>

E-mail : gsace@gsace.com